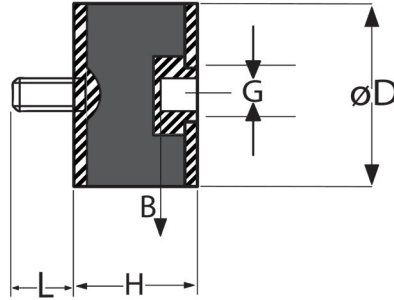


CYLINDRICAL ANTI VIBRATION MOUNTS : TYPE B Male/Female



MALE - FEMALE Cylindrical mounts, a simple and cost effective mount. For use in compression and shear. A very large range of available size and studs.

D = Diameter
H = Height
G = Thread Size
L = Stud Length
B = Thread Depth

Applications:

Exhaust Systems, Small Fans, Instrument Panels.
Compressors, Motors, Electronic Control Panels.

Materials:

Natural Rubber
Styrene Butadiene Rubber (SBR)
Neoprene
Nitrile
Silicone

				45 Shore Hardness (Max KG)		60 Shore Hardness (Max KG)	
Item Number	D (mm)	H (mm)	G x L (B) (mm)	Load	Sheer	Load	Sheer
VCMF0607M3	6	7	M3x6/M3	1.43	0.4	2.2	0.7
VCMF0806M3	8	6	M3x6/M3	3.025	0.9	5.335	1.6
VCMF0808M3	8	8	M3x6/M3	2.64	0.8	4.84	1.5
VCMF0810M3	8	10	M3x6/M3	2.2	0.8	4.4	1.4
VCMF0912M3	9	12	M3 x 6/M3	1.98	0.6	5.94	1.62
VCMF0912M4	9	12	M4 x 10/M4	1.98	0.6	5.94	1.62
VCMF1008M3	10	8	M3 x 6/M3	2.97	0.9	8.69	2.4
VCMF1008M4	10	8	M4 x 10/M4	2.97	0.9	8.69	2.4
VCMF1010M4	10	10	M4 x 10/M4	2.75	1	8.47	3.1
VCMF1015M3	10	15	M3 x 6/M3	1.98	0.7	6.16	2.3
VCMF1017M4	10	17	M4 x 10/M4	1.76	0.5	5.5	1.6
VCMF1018M5	10	18	M5 x 12/M5	1.54	0.45	4.95	1.5
VCMF1111M3	11	11	M3 x 6/M3	2.2	0.8	6.27	2.3
VCMF1111M4	11	11	M4 x 10/M4	2.2	0.8	6.27	2.3
VCMF1210M3	12	10	M3 x 6/M3	3.85	1.4	11	3
VCMF1210M4	12	10	M4 x 10/M4	3.85	1.4	11	3
VCMF1326M3	13	26	M3 x 6/M3	1.54	0.45	4.95	1.5
VCMF1326M4	13	26	M4 x 10/M4	1.54	0.45	4.95	1.5
VCMF1326M5	13	26	M5 x 12/M5	1.54	0.45	4.95	1.5
VCMF1508M4	15	8	M4 x 10/M4	13.2	3	27.5	5.2
VCMF1510M4	15	10	M4 x 10/M4	10.12	4	16.61	5.2
VCMF1510M5	15	10	M5 x 12/M5	10.12	4	16.61	5.2
VCMF1512M4	15	12	M4 x 10/M4	9.02	2.7	15.95	5.2
VCMF1512M5	15	12	M5 x 12/M5	9.02	2.7	15.95	5.2
VCMF1513M4	15	13	M4 x 10/M4	8.69	2.6	15.51	5.2
VCMF1513M5	15	13	M5 x 12/M5	8.69	2.6	15.51	5.2
VCMF1515M4	15	15	M4 x 10/M4	6.6	2	14.63	5.2
VCMF1515M5	15	15	M5 x 12/M5	6.6	2	14.63	5.2
VCMF1520M4	15	20	M4 x 10/M4	5.39	1.6	11	4
VCMF1520M5	15	20	M5 x 12/M5	5.39	1.6	11	4

This information is for guidance only. Customers are recommended to contact us for further technical information on products and applications. We reserve the right to alter specifications or withdraw products without notice.

				45 Shore Hardness (Max KG)		60 Shore Hardness (Max KG)	
Item Number	D (mm)	H (mm)	G x L (B) (mm)	Load	Sheer	Load	Sheer
VCMF1520M5	15	20	M5 x 12/M5 1	5.39	1.6	11	4
VCMF1525M4	15	25	M4 x 10/M4	3.13	1	7.975	2.4
VCMF1525M5	15	25	M5 x 12/M5	3.13	1	7.975	2.4
VCMF1530M4	15	30	M4 x 10/M4	1.925	0.6	4.51	1.4
VCMF1530M5	15	30	M5 x 12/M5	1.925	0.6	4.51	1.4
VCMF1610M4	16	10	M4 x 10/M4	16.5	6	0	0
VCMF1610M5	16	10	M5 x 12/M5	16.5	6	0	0
VCMF1618M4	16	18	M4 x 10/M4	6.6	2	14.63	5.2
VCMF1618M5	16	18	M5 x 15/M5	6.6	2	14.63	5.2
VCMF2010M5	20	10	M5 x 15/M5	18.7	6.8	35.64	9.2
VCMF2010M6	20	10	M6 x 20/M6	18.7	6.8	35.64	9.2
VCMF2011M5	20	11	M5 x 15/M5	18.7	6.5	30.91	9.2
VCMF2011M6	20	11	M6 x 20/M6	18.7	6.5	30.91	9.2
VCMF2012M5	20	12	M5 x 15/M5	16.28	5.9	30.91	9.2
VCMF2012M6	20	12	M6 x 20/M6	16.28	5.9	30.91	9.2
VCMF2015M5	20	15	M5 x 15/M5	13.53	4.2	28.05	9.2
VCMF2015M6	20	15	M6 x 20/M6	13.53	4.2	28.05	9.2
VCMF2015M6	20	17	M5 x 15/M5	12.98	4.2	27.06	9.2
VCMF2017M6	20	17	M6 x 20/M6	12.98	4.2	27.06	9.2
VCMF2017M8	20	17	M8 x 20/M8	12.98	4.2	27.06	9.2
VCMF2020M5	20	20	M5 x 15/M5	12.1	4.2	25.85	9.2
VCMF2020M6	20	20	M6 x 20/M6	12.1	4.2	25.85	9.2
VCMF2020M8	20	20	M8 x 20/M8	12.1	4.2	25.85	9.2
VCMF2025M5	20	25	M5 x 15/M5	11.55	4.2	24.97	9.2
VCMF2025M6	20	25	M6 x 20/M6	11.55	4.2	24.97	9.2
VCMF2025M8	20	25	M8 x 20/M8	11.55	4.2	24.97	9.2
VCMF2030M5	20	30	M5 x 15/M5	11.22	4.1	24.53	9
VCMF2030M6	20	30	M6 x 20/M6	11.22	4.1	24.53	9
VCMF2030M8	20	30	M8 x 20/M8	11.22	4.1	24.53	9
VCMF2515M6	25	15	M6 x 20/M6	23.65	6.6	47.52	14.4
VCMF2515M6	25	15	M6 x 20/M6	23.65	6.6	47.52	14.4
VCMF2515M8	25	15	M8 x 20/M8	23.65	6.6	47.52	14.4
VCMF2517M6	25	17	M8 x 20/M8	22.77	6.6	46.31	14.4
VCMF2517M8	25	20	M6 x 20/M6	22.77	6.6	46.31	14.4
VCMF2520M6	25	20	M6 x 20/M6	20.24	6.6	42.35	14.4
VCMF2520M8	25	20	M8 x 20/M8	20.24	6.6	42.35	14.4
VCMF2522M6	25	22	M6 x 20/M6	19.58	6.6	41.14	14.4
VCMF2522M8	25	22	M8 x 20/M8	19.58	6.6	41.14	14.4
VCMF2525M6	25	25	M6 x 20/M6	18.81	6.6	40.26	14.4
VCMF2525M8	25	25	M8 x 20/M8	18.81	6.6	40.26	14.4
VCMF2527M6	25	27	M6 x 20/M6	18.48	6.6	39.82	14.4

This information is for guidance only. Customers are recommended to contact us for further technical information on products and applications.
We reserve the right to alter specifications or withdraw products without notice.

				45 Shore Hardness (Max KG)		60 Shore Hardness (Max KG)	
Item Number	D (mm)	H (mm)	G x L (B) (mm)	Load	Sheer	Load	Sheer
VCMF2528M6	25	28	M6 x 20/M6	17.82	6.6	39.49	14.4
VCMF2528M8	25	28	M8 x 20/M8	17.82	6.6	39.49	14.4
VCMF2530M6	25	30	M6 x 20/M6	18.04	6.6	39.16	14.4
VCMF2530M8	25	30	M8 x 20/M8	18.04	6.6	39.16	14.4
VCMF2622M6	26	22	M6 x 20/M6	20.35	7.5	42.9	16.8
VCMF2622M8	26	22	M8x20/M8	20.35	7.5	42.9	16.8
VCMF3015M10	30	15	M10x25/M10	41.58	9.5	79.53	20.8
VCMF3015M6	30	15	M6 x 20/M6	41.58	9.5	79.53	20.8
VCMF3015M8	30	15	M8 x 20/M8	41.58	9.5	79.53	20.8
VCMF3017M10	30	17	M10x25/M10	39.6	9.5	73.7	20.8
VCMF3017M6	30	17	M6 x 20/M6	39.6	9.5	73.7	20.8
VCMF3017M8	30	17	M8 x 20/M8	39.6	9.5	73.7	20.8
VCMF3018M10	30	18	M10x25/M10	37.4	9.5	69.3	20.8
VCMF3018M6	30	18	M10x25/M10	37.4	9.5	69.3	20.8
VCMF3018M8	30	18	M8 x 20/M8	37.4	9.5	69.3	20.8
VCMF3020M10	30	20	M10x25/M10	32.45	9.5	66	20.8
VCMF3020M6	30	20	M6 x 20/M6	32.45	9.5	66	20.8
VCMF3020M8	30	20	M8 x 20/M8	32.45	9.5	66	20.8
VCMF3022M10	30	22	M10x25/M10	29.7	9.5	62.7	20.8
VCMF3022M6	30	22	M6 x 20/M6	29.7	9.5	62.7	20.8
VCMF3022M8	30	22	M8 x 20/M8	29.7	9.5	62.7	20.8
VCMF3025M10	30	25	M6 x 20/M6	28.93	9.5	60.72	20.8
VCMF3025M6	30	25	M6 x 20/M6	28.93	9.5	60.72	20.8
VCMF3025M8	30	25	M8 x 20/M8	28.93	9.5	60.72	20.8
VCMF3030M10	30	30	M10x25/M10	27.28	9.5	58.19	20.8
VCMF3030M6	30	30	M6 x 20/M6	27.28	9.5	58.19	20.8
VCMF3030M8	30	30	M8 x 20/M8	27.28	9.5	58.19	20.8
VCMF3035M10	30	35	M10x25/M10	26.4	9.5	56.1	20.8
VCMF3035M6	30	35	M6 x 20/M6	26.4	9.5	56.1	20.8
VCMF3035M8	30	35	M8 x 20/M8	26.4	9.5	56.1	20.8
VCMF3040M10	30	40	M10x25/M10	25.63	9.5	55.88	20.8
VCMF3040M6	30	40	M6 x 20/M6	25.63	9.5	55.88	20.8
VCMF3040M8	30	40	M8 x 20/M8	25.36	9.5	55.88	20.8
VCMF3045M10	30	45	M10x25/M10	22	9.5	44	20.8
VCMF3045M6	30	45	M6 x 20/M6	22	9.5	44	20.8
VCMF3045M8	30	45	M8 x 20/M8	22	9.5	44	20.8
VCMF3535M8	35	35	M8 x 20/M8	56.1	24	69.3	33
VCMF4015M10	40	15	M10x25/M10	33	8	55	12
VCMF4015M6	40	15	M6 x 20/M6	33	8	55	12
VCMF4015M8	40	15	M8 x 23/M8	33	8	55	12
VCMF4020M10	40	20	M10x25/M10	69.52	17	134.86	36.9

This information is for guidance only. Customers are recommended to contact us for further technical information on products and applications.
We reserve the right to alter specifications or withdraw products without notice.

				45 Shore Hardness (Max KG)		60 Shore Hardness (Max KG)	
Item Number	D (mm)	H (mm)	G x L (B) (mm)	Load	Sheer	Load	Sheer
VCMF4020M8	40	20	M8 x 23/M8	69.52	17	134.86	36.9
VCMF4025M10	40	25	M10x25/M10	59.4	17	123.2	36.9
VCMF4025M6	40	25	M6 x 20/M6	59.4	17	123.2	36.9
VCMF4025M8	40	25	M8 x 23/M8	59.4	17	123.2	36.9
VCMF4028M10	40	28	M10x25/M10	54.12	17	114.4	36.9
VCMF4028M6	40	28	M6 x 20/M6	54.12	17	114.4	36.9
VCMF4028M8	40	28	M8 x 23/M8	54.12	17	114.4	36.9
VCMF4030M10	40	30	M10x25/M10	52.91	17	110.22	36.9
VCMF4030M6	40	30	M6 x 20/M6	52.91	17	110.22	36.9
VCMF4030M8	40	30	M8 x 23/M8	52.91	17	110.22	36.9
VCMF4035M10	40	35	M10x25/M10	50.6	17	107.58	36.9
VCMF4035M6	40	35	M6 x 20/M6	50.6	17	107.58	36.9
VCMF4035M8	40	35	M8 x 23/M8	50.6	17	107.58	36.9
VCMF4038M10	40	38	M10x25/M10	48.95	17	107.58	36.9
VCMF4038M6	40	38	M6 x 20/M6	48.95	17	105.16	36.9
VCMF4038M8	40	38	M8 x 23/M8	48.95	17	105.16	36.9
VCMF4040M10	40	40	M10x25/M10	48.07	17	102.85	36.9
VCMF4040M6	40	40	M6 x 20/M6	48.07	17	102.85	36.9
VCMF4040M8	40	40	M8 x 23/M8	48.07	17	102.85	36.9
VCMF4045M10	40	45	M10x25/M10	46.31	15	86.13	32
VCMF4045M6	40	45	M6 x 20/M6	46.31	15	86.13	32
VCMF4045M8	40	45	M8 x 23/M8	46.31	15	86.13	32
VCMF4060M10	40	60	M10x25/M10	42.79	14	53.13	28.5
VCMF4060M6	40	60	M6 x 20/M6	42.79	14	53.13	28.5
VCMF4060M8	40	60	M8 x 23/M8	42.79	14	53.13	28.5
VCMF5020M10	50	20	M10x25/M10	137.28	26.5	253.66	57.7
VCMF5020M12	50	20	M12x33/M12	137.28	26.5	253.66	57.7
VCMF5020M8	50	20	M8 x 23/M8	137.28	26.5	253.66	57.7
VCMF5021M10	50	21	M10x25/M10	134.64	26.5	250.03	57.7
VCMF5021M12	50	21	M12x33/M12	134.64	26.5	250.03	57.7
VCMF5021M8	50	21	M8 x 23/M8	134.64	26.5	250.03	57.7
VCMF5025M10	50	25	M10x25/M10	107.36	26.5	209	57.7
VCMF5025M12	50	25	M12x33/M12	107.36	26.5	209	57.7
VCMF5025M8	50	25	M8 x 23/M8	107.6	26.5	209	57.7
VCMF5028M10	50	28	M10x25/M10	97.79	26.5	194.81	57.7
VCMF5028M12	50	28	M12x33/M12	97.79	26.5	194.81	57.7
VCMF5028M8	50	28	M8 x 23/M8	97.79	26.5	194.81	57.7
VCMF5030M10	50	30	M10x25/M10	93.06	26.5	187.66	57.7
VCMF5030M12	50	30	M12x33/M12	93.06	26.5	187.66	57.7
VCMF5030M8	50	30	M8 x 23/M8	93.06	26.5	187.66	57.7
VCMF5035M10	50	35	M10x25/M10	85.14	26.5	175.78	57.7

This information is for guidance only. Customers are recommended to contact us for further technical information on products and applications.
We reserve the right to alter specifications or withdraw products without notice.

				45 Shore Hardness (Max KG)		60 Shore Hardness (Max KG)	
Item Number	D (mm)	H (mm)	G x L (B) (mm)	Load	Sheer	Load	Sheer
VCMF5037M8	50	37	M8 x 23/M8	81.4	26.5	171.6	57.7
VCMF5040M10	50	40	M10x25/M10	80.3	26.5	168.63	57.7
VCMF5040M12	50	40	M12x33/M12	80.3	26.5	168.63	57.7
VCMF5040M8	50	40	M8 x 23/M8	80.3	26.5	168.63	57.7
VCMF5042M10	50	42	M10x25/M10	78.65	26.5	166.21	57.7
VCMF5042M12	50	42	M12x33/M12	78.65	26.5	166.21	57.7
VCMF5042M8	50	42	M8 x 23/M8	78.65	26.5	166.21	57.7
VCMF5045M10	50	45	M10x25/M10	77.11	26.5	163.9	57.7
VCMF5045M12	50	45	M12x33/M12	77.11	26.5	163.9	57.7
VCMF5045M8	50	45	M8 x 23/M8	77.11	26.5	163.9	57.7
VCMF5050M10	50	50	M10x25/M10	74.91	26.5	160.6	57.7
VCMF5050M12	50	50	M12x33/M12	74.91	26.5	160.6	57.7
VCMF5050M8	50	50	M8 x 23/M8	74.91	26.5	160.6	57.7
VCMF5080M10	50	80	M10x25/M10	46.86	22	100.32	50
VCMF5080M12	50	80	M12x33/M12	46.86	22	100.32	50
VCMF5080M8	50	80	M8 x 23/M8	46.86	22	100.32	50
VCMF6025M10	60	25	M8 x 23/M10	167.75	30	312.18	68
VCMF6025M8	60	25	M8 x 23/M8	167.75	30	312.18	68
VCMF6030M10	60	30	M10x25/M10	142.56	30	264	68
VCMF6030M12	60	30	M12x37/M12	142.56	30	264	68
VCMF6030M8	60	30	M8 x 23/M8	142.56	30	264	68
VCMF6035M10	60	35	M12x37/M10	136.07	30	252.78	68
VCMF6035M12	60	35	M12x37/M12	136.07	30	252.78	68
VCMF6035M8	60	35	M8 x 23/M8	136.07	30	252.78	68
VCMF6040M10	60	40	M10x25/M10	123.2	30	230.01	68
VCMF6040M12	60	40	M12x37/M12	123.2	30	230.01	68
VCMF6040M8	60	40	M8 x 23/M8	123.2	30	230.01	68
VCMF6045M10	60	45	M10x25/M10	110.11	30	205.48	68
VCMF6045M12	60	45	M12x37/M12	110.11	30	205.48	68
VCMF6045M8	60	45	M8 x 23/M8	110.11	30	205.48	68
VCMF6050M10	60	50	M10x25/M10	97.79	30	182.05	68
VCMF6050M12	60	50	M12x37/M12	97.79	30	182.05	68
VCMF6050M8	60	50	M8 x 23/M8	97.79	30	182.05	68
VCMF6060M10	60	60	M10x25/M10	80.3	30	149.6	68
VCMF6060M12	60	60	M12x37/M12	80.3	30	149.6	68
VCMF6060M8	60	60	M8 x 23/M8	80.3	30	149.6	68
VCMF6535M12	65	35	M12x37/M12	176	35	385	68
VCMF7030M10	70	30	M10x25/M10	236.94	40	503.85	80
VCMF7030M12	70	30	M12x37/M12	236.94	40	503.85	80
VCMF7035M10	70	35	M10x25/M10	208.56	40	430.21	80
VCMF7035M12	70	35	M12x37/M12	208.56	40	430.21	80
VCMF7040M10	70	40	M10x25/M10	180.18	40	357.28	80

This information is for guidance only. Customers are recommended to contact us for further technical information on products and applications.
We reserve the right to alter specifications or withdraw products without notice.

				45 Shore Hardness (Max KG)		60 Shore Hardness (Max KG)	
Item Number	D (mm)	H (mm)	G x L (B) (mm)	Load	Sheer	Load	Sheer
VCMF7040M12	70	40	M12x37/M12	180.18	40	357.28	80
VCMF7045M10	70	45	M10x25/M10	173.25	40	341.55	80
VCMF7045M12	70	45	M12x37/M12	173.25	40	341.55	80
VCMF7050M10	70	50	M10x25/M10	156.53	40	321.97	80
VCMF7050M12	70	50	M12x37/M12	156.53	40	321.97	80
VCMF7055M10	70	55	M10x25/M10	149.71	40	311.74	80
VCMF7055M12	70	55	M12x37/M12	149.71	40	311.74	80
VCMF7060M10	70	60	M10x25/M10	132	40	242	80
VCMF7060M12	70	60	M12x37/M12	132	40	242	80
VCMF7070M10	70	70	M10x25/M10	121	40	209	80
VCMF7070M12	70	70	M12x37/M12	121	40	209	80
VCMF75100M10	75	100	M10x30/M10	137.83	40.7	291.5	105.3
VCMF75100M12	75	100	M12x37/M12	137.83	40.7	291.5	105.3
VCMF7525M10	75	25	M10x30/M10	329.34	59.6	715	129.9
VCMF7525M12	75	25	M12x37/M12	329.34	59.6	715	129.9
VCMF7530M10	75	30	M10x30/M10	294.03	59.6	624.47	129.9
VCMF7530M12	75	30	M12x37/M12	294.03	59.6	624.47	129.9
VCMF7535M10	75	35	M10x30/M10	258.83	59.6	533.83	129.9
VCMF7535M12	75	35	M12x37/M12	258.83	59.6	533.83	129.9
VCMF7540M10	75	40	M10x30/M10	223.52	59.6	443.3	129.9
VCMF7540M12	75	40	M12x37/M12	223.52	59.6	443.3	129.9
VCMF7545M10	75	45	M10x30/M10	209.55	59.6	423.83	129.9
VCMF7545M12	75	45	M12x37/M12	209.55	59.6	423.83	129.9
VCMF7550M10	75	50	M10x30/M10	194.26	59.6	399.52	129.9
VCMF7550M12	75	50	M12x37/M12	194.26	59.6	399.52	129.9
VCMF7555M10	75	55	M10x30/M10	185.79	59.6	386.87	129.9
VCMF7555M12	75	55	M12x37/M12	185.79	59.6	386.87	129.9
VCMF7560M10	75	60	M10x30/M10	170.5	59.6	352	118.6
VCMF7560M12	75	60	M12x37/M12	170.5	59.6	352	118.6
VCMF7570M10	75	70	M10x30/M10	154	50.3	326.04	115.2
VCMF7570M12	75	70	M12x37/M12	154	50.3	326.04	115.2
VCMF8030M14	80	30	M14x35/M14	382.25	104.1	724.57	197
VCMF8050M14	80	50	M14x35/M14	285	104.1	597.1	197
VCMF8060M14	80	60	M14x35/M14	164	104.1	309	197
VCM-F9050MS1215	90	50	M12x14/M12	383.3	99	752	198.6
VCMF100100M12	100	100	M12x33/M12	275	106	440.66	230.9
VCMF100100M16	100	100	M16x45/M16	275	106	440.66	230.9
VCMF10040M12	100	40	M12x33/M12	499.51	106	940.39	230.9
VCMF10040M16	100	40	M16x45/M16	499.51	106	940.39	230.9
VCMF10045M12	100	45	M12x33/M12	454.85	106	869	230.9
VCMF10045M16	100	45	M16x45/M16	454.85	106	869	230.9

This information is for guidance only. Customers are recommended to contact us for further technical information on products and applications.
We reserve the right to alter specifications or withdraw products without notice.

				45 Shore Hardness (Max KG)		60 Shore Hardness (Max KG)	
Item Number	D (mm)	H (mm)	G x L (B) (mm)	Load	Sheer	Load	Sheer
VCMF10050M16	100	50	M16x45/M16	393.47	106	814	230.9
VCMF10055M12	100	55	M12x33/M12	380.05	106	762.19	230.9
VCMF10055M16	100	55	M16x45/M16	380.05	106	762.19	230.9
VCMF10060M12	100	60	M12x33/M12	332.2	106	655.5	230.9
VCMF10060M16	100	60	M16x45/M16	332.2	106	655.5	230.9
VCMF10070M12	100	70	M12x33/M12	319	106	583.66	230.9
VCMF10070M16	100	70	M16x45/M16	319	106	583.66	230.9
VCMF10075M12	100	75	M12x33/M12	302.5	106	480.26	230.9
VCMF10075M16	100	75	M16x45/M16	302.5	106	480.26	230.9
VCMF10080M12	100	80	M12x33/M12	289.3	106	449.13	230.9
VCMF10080M16	100	80	M16x45/M16	289.3	106	449.13	230.9
VCMF15050M16	150	50	M16x45/M16	688.93	194.7	1290.26	355.1
VCMF15050M20	150	50	M20x45/M20	688.93	194.7	1290.26	355.1
VCMF15055M16	150	55	M16x45/M16	649.99	194.7	1184.26	355.1
VCMF15055M20	150	55	M20x45/M20	649.99	194.7	1184.26	355.1
VCMF15060M16	150	60	M20x45/M16	587.73	194.7	1050.83	355.1
VCMF15060M20	150	60	M20x45/M20	587.73	194.7	1050.83	355.1
VCMF15075M16	150	75	M16x45/M16	492.58	185.5	886.6	355.1
VCMF15075M20	150	75	M20x45/M20	492.58	185.5	886.6	355.1
VCMF200100M20	200	100	M20x41/M20	1320	396	2200	355.1

This information is for guidance only. Customers are recommended to contact us for further technical information on products and applications.
We reserve the right to alter specifications or withdraw products without notice.